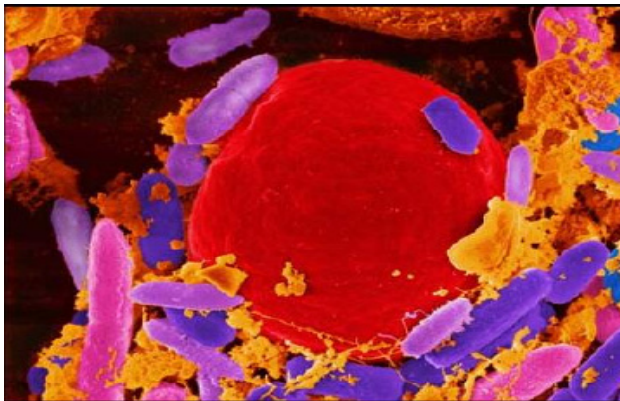




**ALERT**

## Red Eye Epidemic

Before 2013, most of the health issues coming from polluted water were an affect of pathogens. Pathogens are the disease-causing organisms that grow and multiply within a host. The resulting growth of microorganisms in a host is referred to as an infection (Windelson). Examples of pathogens associated with water include bacteria, viruses, helminthes, and protozoans. In 2013, a new strain of pathogen thrived in the waste accumulated water sources of Terra. This new strain, mutated from a well- known pathogen cryptosporidium parvum, is known to cause diarrhea, abdominal pain, nausea, and vomiting to its host. The new form, known as cryptosporidium partuem, was deadlier than predicted and was completely indictable by BOD, DO, and other tests to ensure safe drinking water.



*Cryptosporidium partuem*



*Final stage for "The Red Eye" Patient has approximately 12 hours to live.*

*Cryptosporidium partuem* (commonly known as "The Red Eye") is treatable by conventional forms of antibiotics, if treatment steps are taken within ten days of infection. However, the symptoms of this pathogen are only visible after 60 days contamination.

The cornea of the eye turning red is the first sign of infection. After this occurs, the host only has 12 hours to live, making the survival rate a maximum of 3% after succumbing to "The Red Eye". (Evert)

With the fear of death from public drinking water increasing, residents of Terra hydrated by consuming other fluids, such as milk and fruit juices. However, the death toll continued to rise. Further research indicated it was possible to transmit "red eye" through plants and their fruit, as well as from milk of contaminated animals. This outbreak seemed to happen simultaneously over Terra, and struck large populated areas that used treated water as a drinking source. The following epidemic brought panic, chaos and death to the

inhabitants of Terra. As a result of increased industrial dumping into drinkable water sources, anew plague was destroying Terra and its occupants.

Between 2013 and 2019, the population of Terra was reduced by 25% as a result of the waterborne distribution of "red eye". This resulted in an obvious increase in cadavers, which related to an increase in soil contamination from the conventional burying of diseased bodies. To reduce the potential of further contamination the United Nations mandated the cremation of future fatalities. However, this created a more severe predicament. Research indicated *Cryptosporidium partuem* was deadlier in an airborne suspension than in a waterborne solution. The death toll rose to the 3.4 billion in 2020 as a result of this new pollution (Evert).